

Comparing the current calibrated CPUE series for PEI toothfish to that for last year

Anabela Brandão and Doug S. Butterworth

Marine Resource Assessment & Management Group (MARAM)

Department of Mathematics and Applied Mathematics

University of Cape Town

Rondebosch, 7701, South Africa

October 2012

Figure 1 compares the calibrated longline CPUE trends from this year's analyses to that of the GLMM-standardised CPUE trends for the Spanish longline obtained in last year's analyses.

Table 1 shows the total number of data entries per year available for the GLMM analyses performed last year and this year. The percentage reduction in sets used from last year is also shown. The main reason for the reduction in this year's analyses arises from an initial comparison of the data from different sources (such as the data used in previous CPUE analyses, the CCAMLR database and the original C2 forms and observer forms). One key correction in the data used in the present analyses is that previously some sets were accorded a zero catch but in the CCAMLR database they are recorded "NA" sets indicating that the set has no catch for some reason presumably unrelated to local abundance of toothfish. All these sets have now been omitted from the analyses.

The reason for the 26% increase in observations in 2002 in this year's analyses is because observer data for a trip with 74 sets that were previously not included in the database used for GLM analyses and have now been added.

A full data verification exercise has not been possible due to a lack of time before analyses had to be completed to provide a basis for management advice.

Table 1. The total number of sets per year available for the GLMM analyses performed last year and this year. The percentage reduction in observations (for reasons explained in the main text) from last year is also shown.

Year	Last year's analyses	Current analyses	% reduction
1997	488	472	3.3
1998	1455	1386	4.7
1999	1347	1231	8.6
2000	1692	1671	1.2
2001	585	584	0.2
2002	253	319	-26.1
2003	585	573	2.1
2004	446	417	6.5
2005	181	181	0.0
2006	150	137	8.7
2007	523	509	2.7
2008	113	89	21.2
2009	58	54	6.9
2010	83	73	12.0

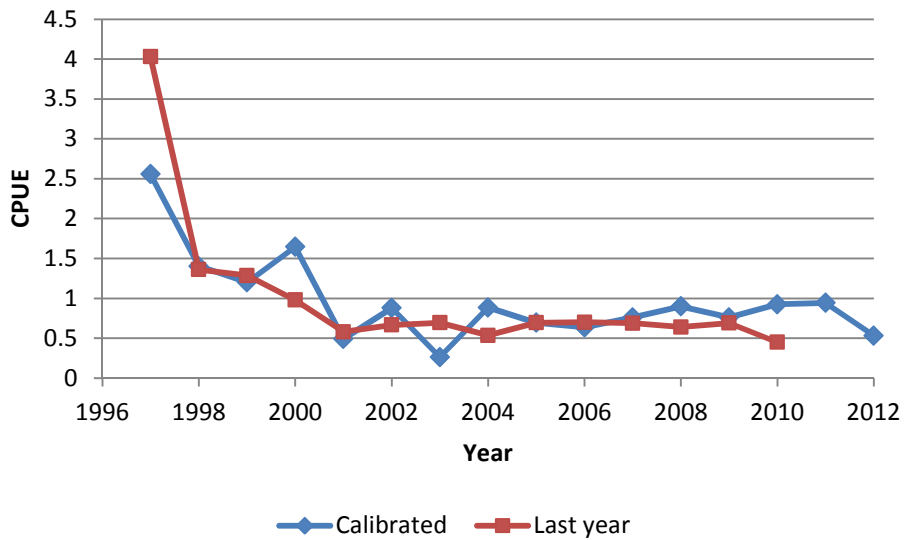


Figure 1. Calibrated longline CPUE trends from this year's analyses compared to the GLMM-standardised CPUE trends for the Spanish longline obtained in last year's analyses (both normalised to their mean over the 1997 to 2010 period).