

Further outputs for a re-look at the “original” model fits for Area 5+6 and some further plots of combined resource estimates

S.J. Johnston

Closer examination of the A5+6 fits to the CPUE data and F% data showed that this model fit was most likely not fully converged. Attempts have been made to reach convergence, and the new model fits for Area 5+6 are reported here, along with B_{75}^m trends for all five super-areas, and for the combined resource.

Figure 1: Fits to CPUE and F% ("n" refers to the new variant, and "o*" refers to the updated original model variant).

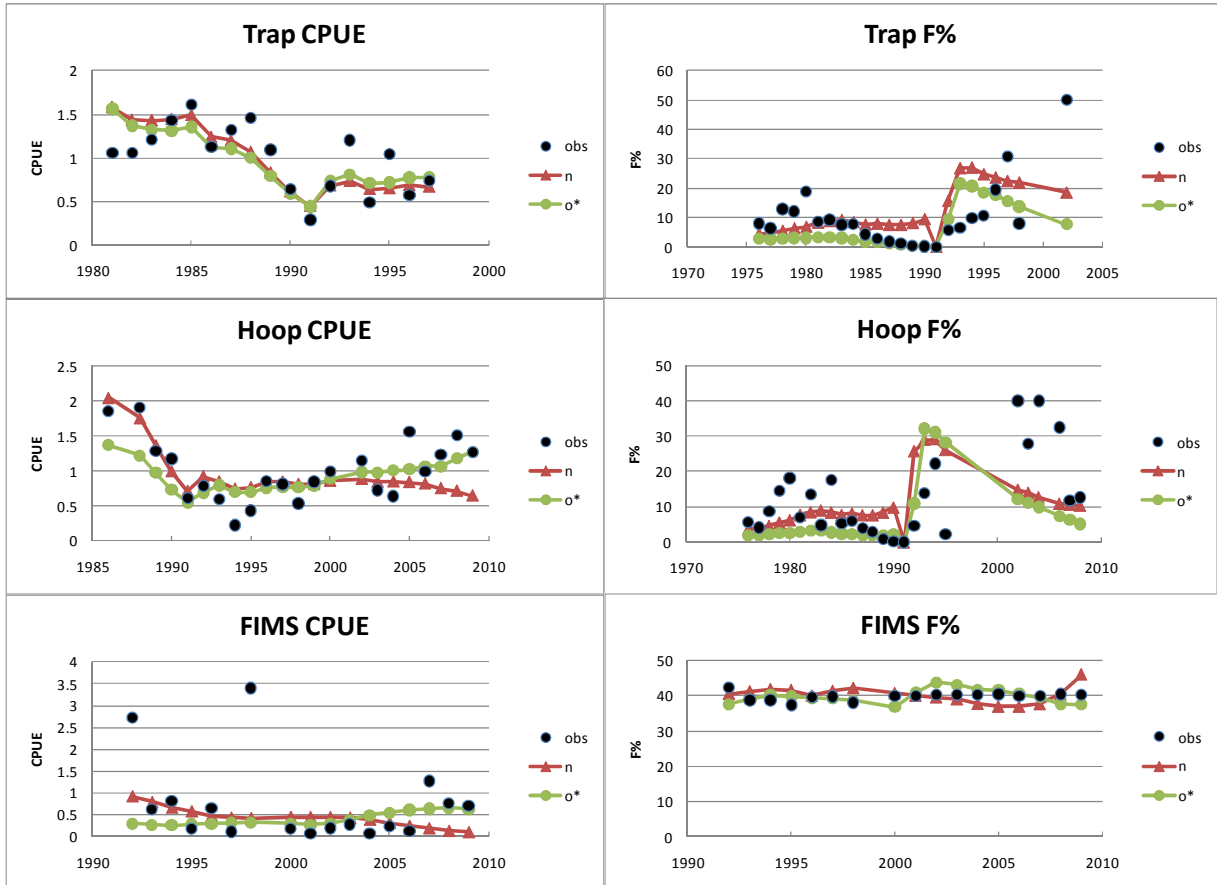


Figure 2; Area 5+6 "o*" population trends. The right panel is a 1980+ "zoom in".

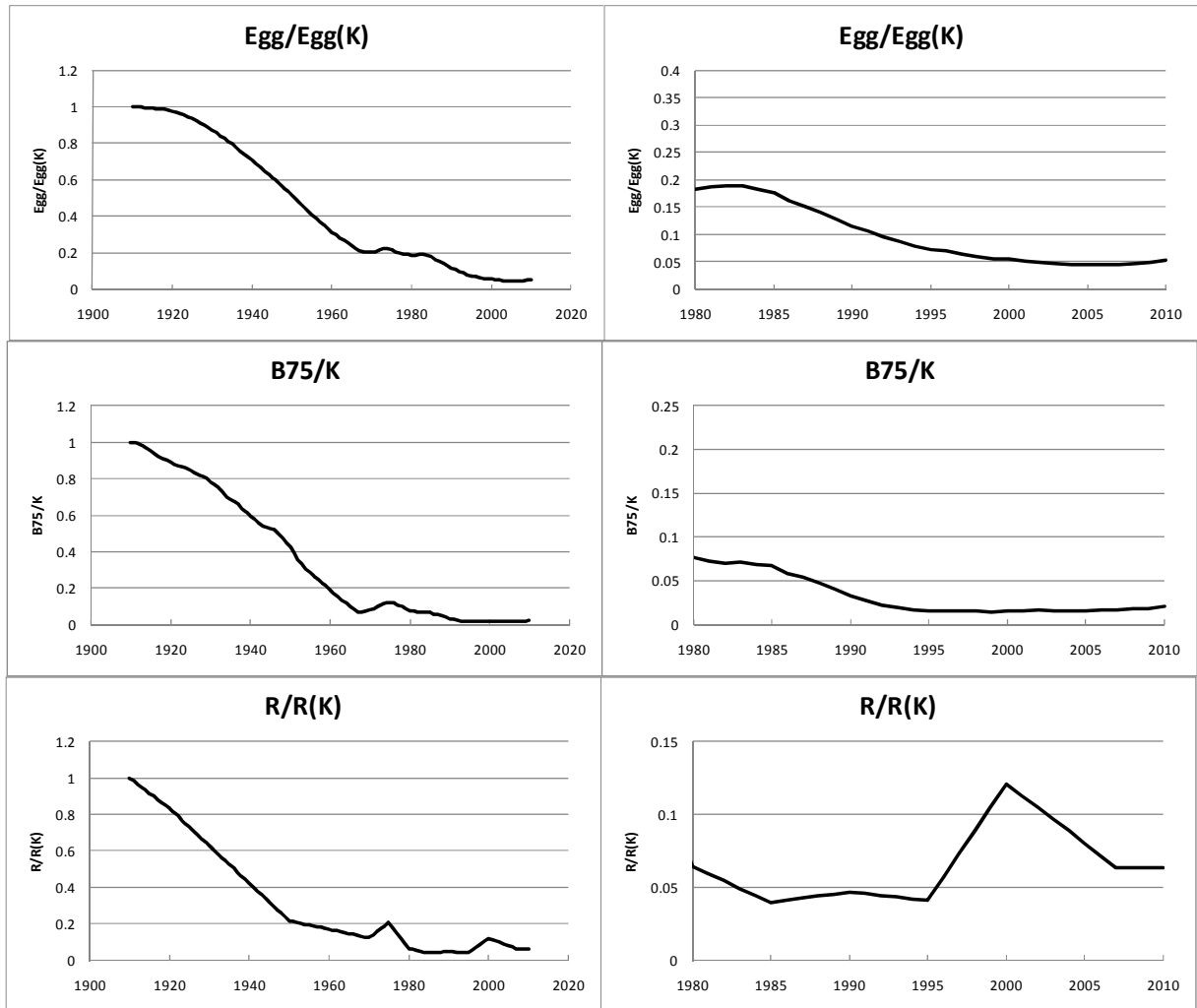


Figure 3a: B_{75}^m trends for all five super-areas and the combined resource for the 2010 updated assessments using the “original” model variant. The right panel is a 1980+ “zoom in”.

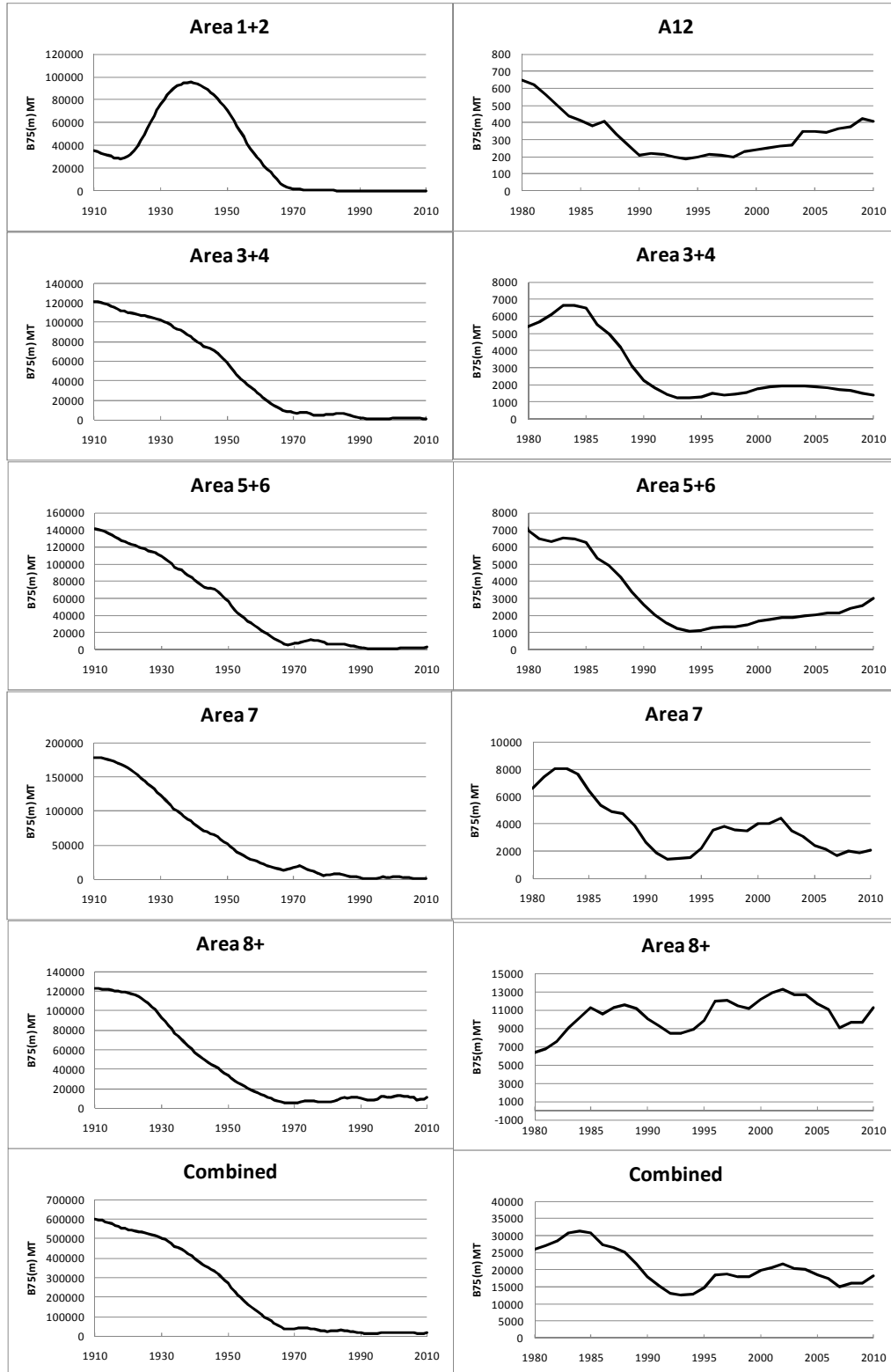


Figure 3b: B_{75}^m/K trends for all five super-areas and the combined resource for the 2010 updated assessments using the “original” model variant. The right panel is a 1980+ “zoom in”.

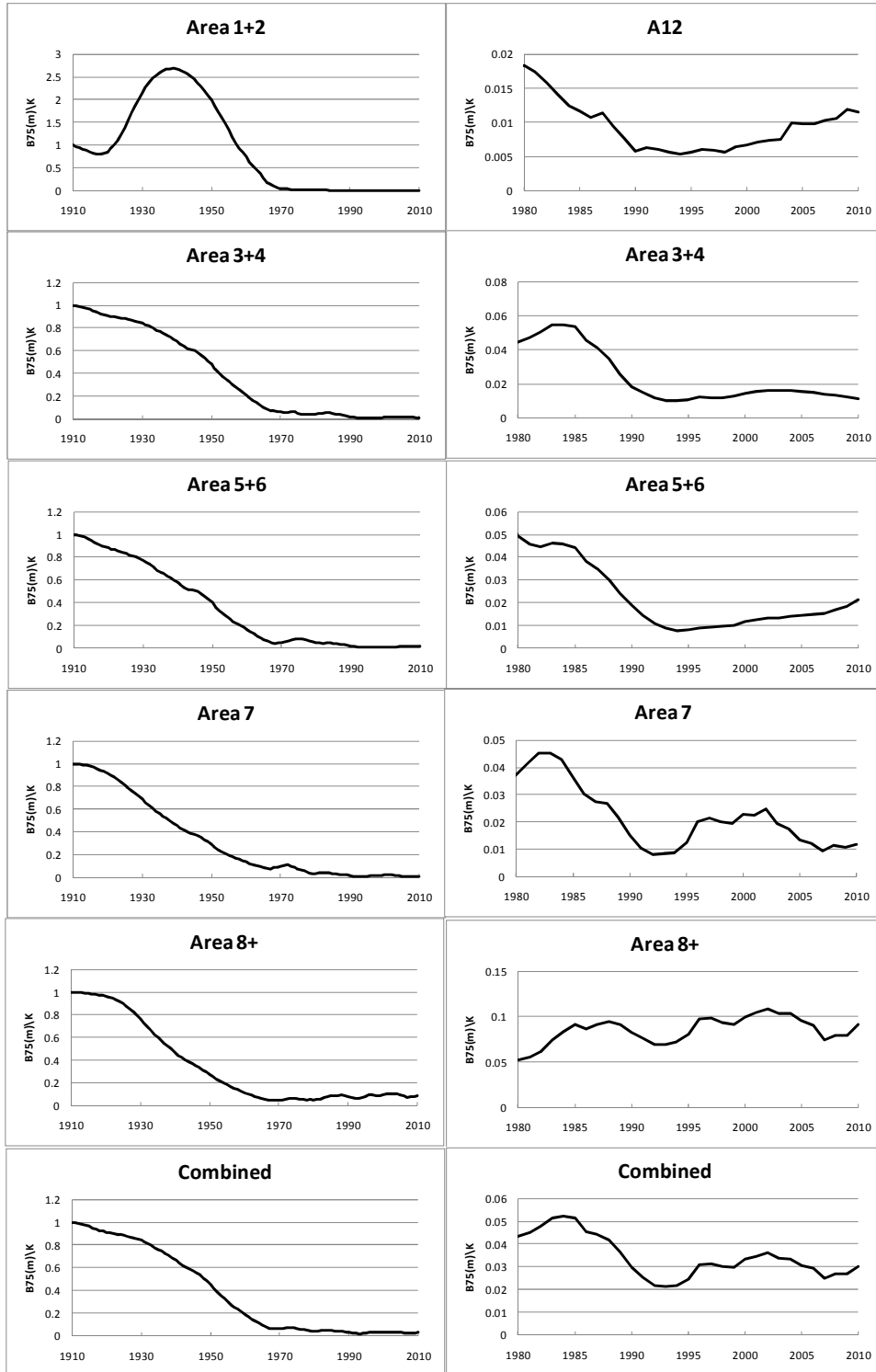


Figure 3c: Comparison of B_{75}^m and B_{75}^m/K trends for all five super-areas for the 2010 updated assessments using the “original” model variant. The right panel is a 1980+ “zoom in”.

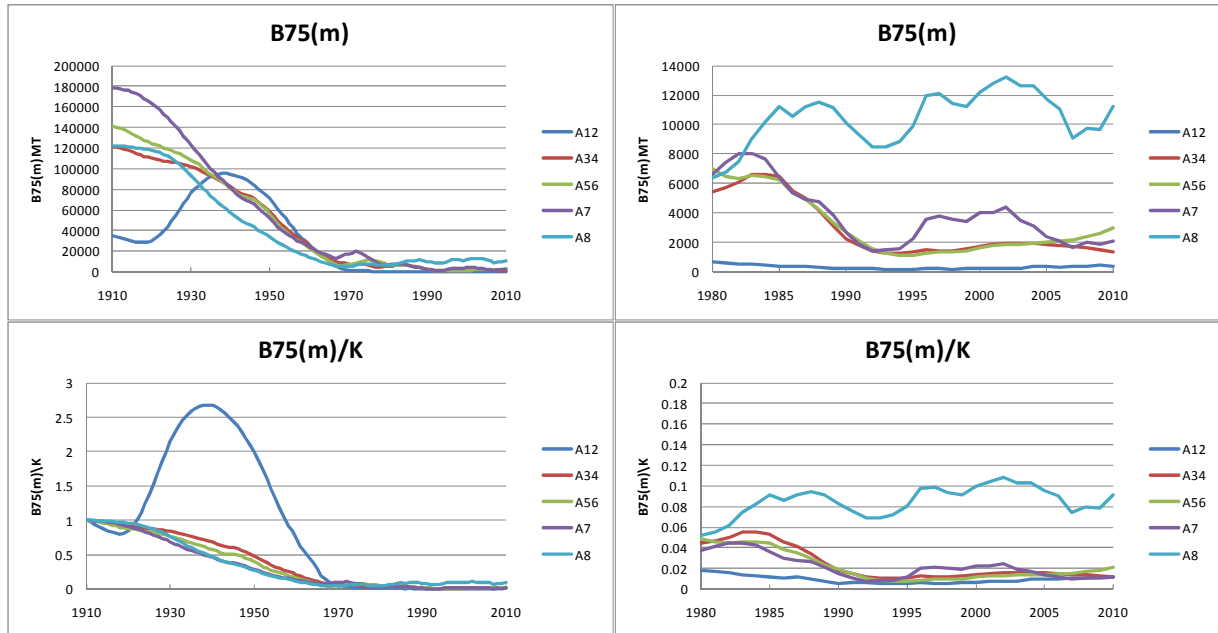


Figure 4: Comparison between the “new” and “original” model variants combined B_{75}^m/K trends. The bottom plot is the 1980+ “zoom in”.

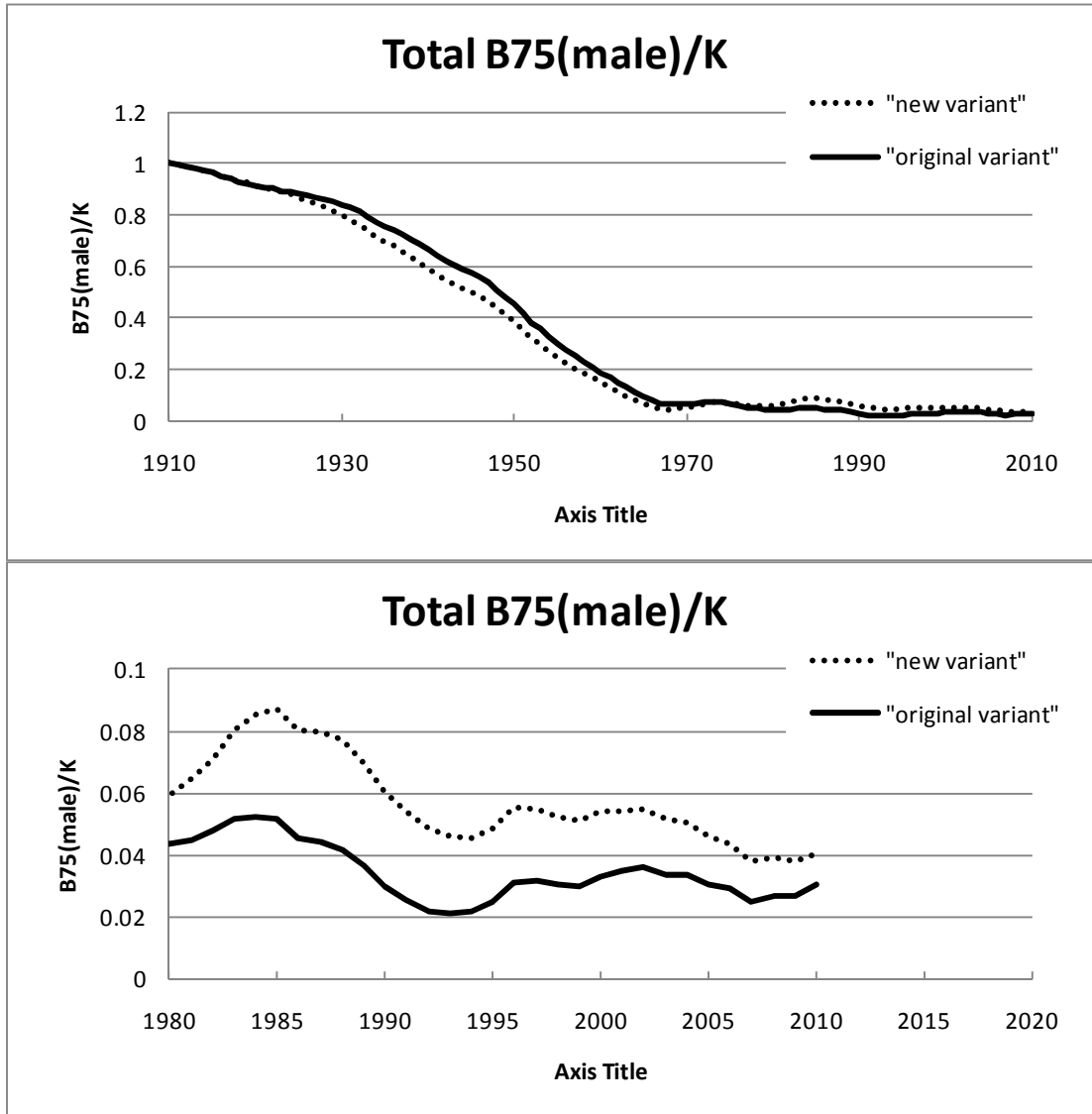


Figure 5: The combined B_{75}^m/K trend relative to the unexploited level (K). The green circle shows the intended biomass recovery target level for OMP 1997, and the red square shows the intended biomass recovery target for OMP 2007.

